

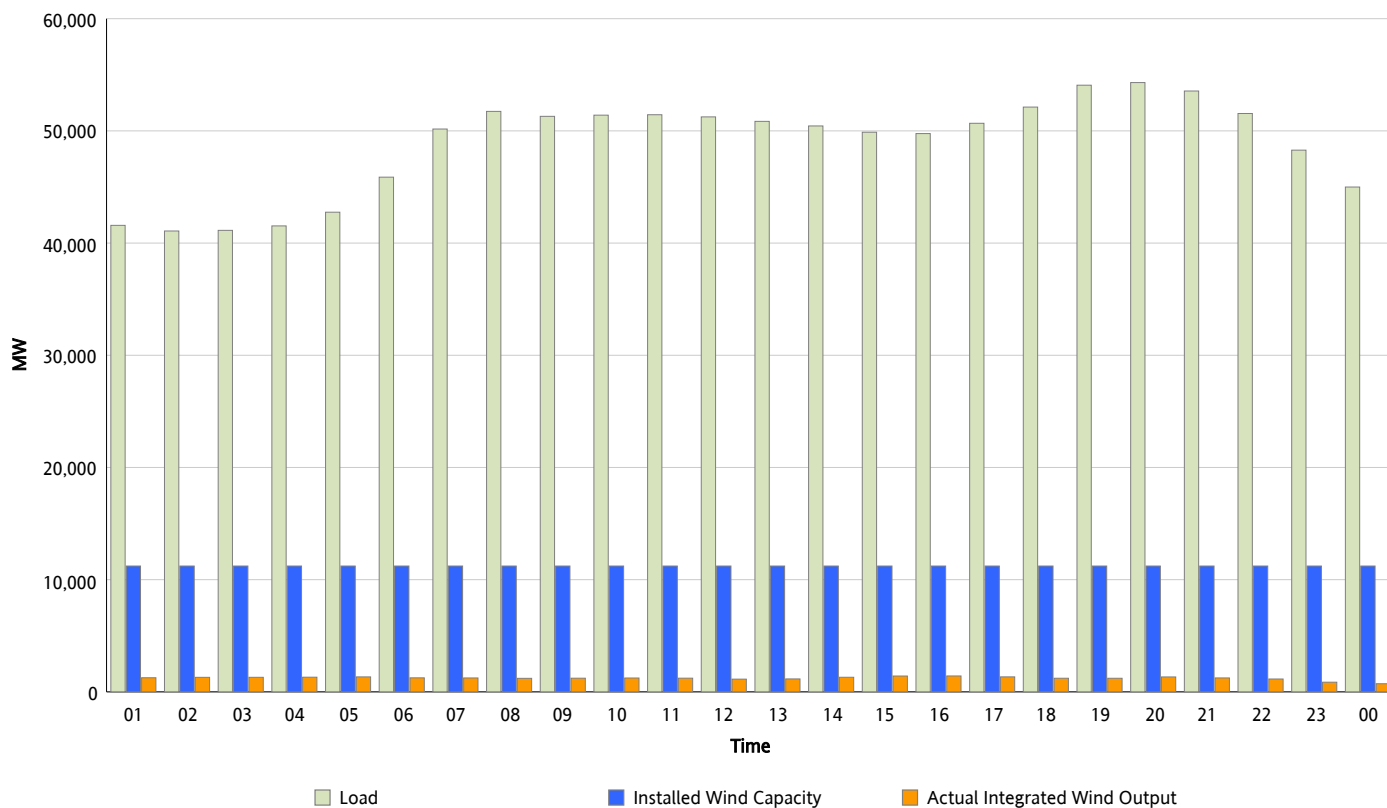


## ERCOT Grid Operations

### Wind Integration Report : 02/11/2014

Peak Load	54,306 MW
Load Peak Hour (HE)	20
Wind Over Peak	1,332 MW
Wind Record 05/02/13	9,674 MW
Max Wind Value*	1,519 MW
Wind Peak Time	14:52
Wind Integration %	3.05 %

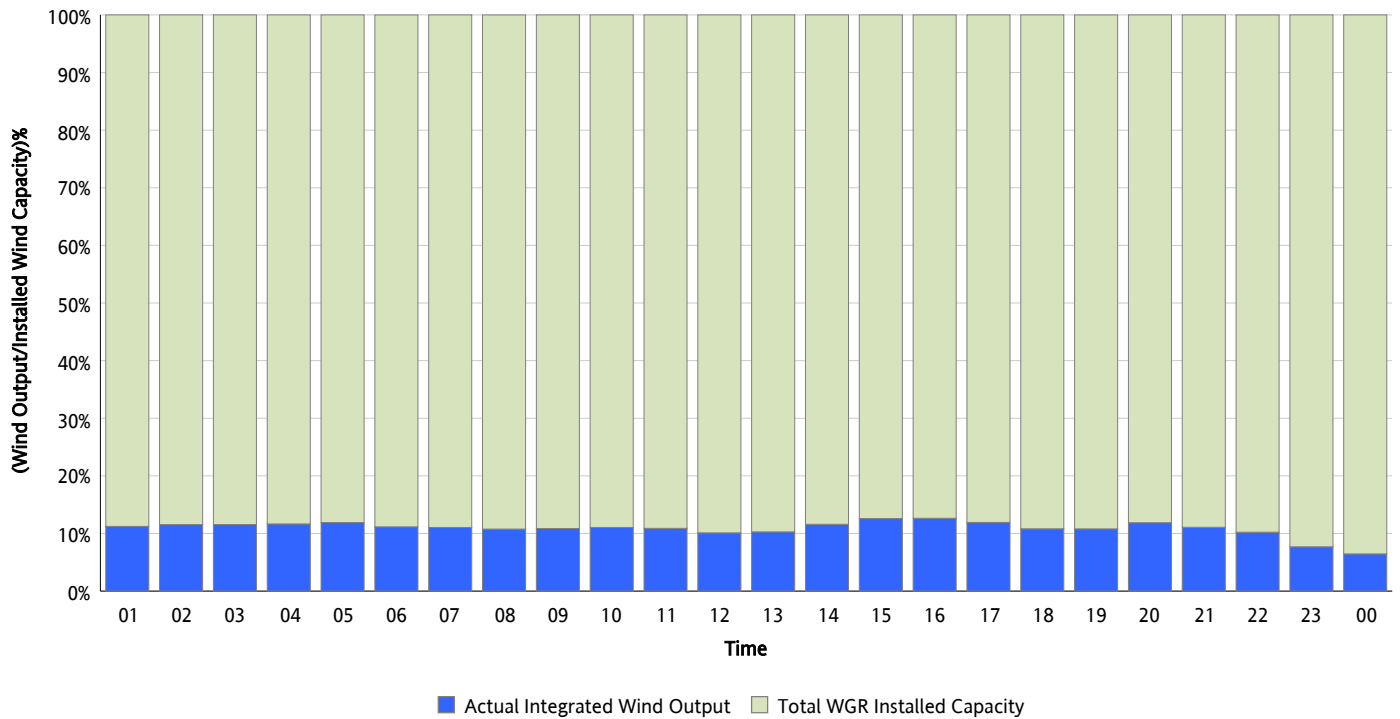
**Hourly Average Actual Load vs. Actual Wind Output**  
02/11/2014



*\* Wind Record and Wind Max represent instantaneous values and the rest of the values are integrated over the hour.  
Capacity numbers used in the graphs are based on the expected commercial operation date of each Wind Generation Resource.*

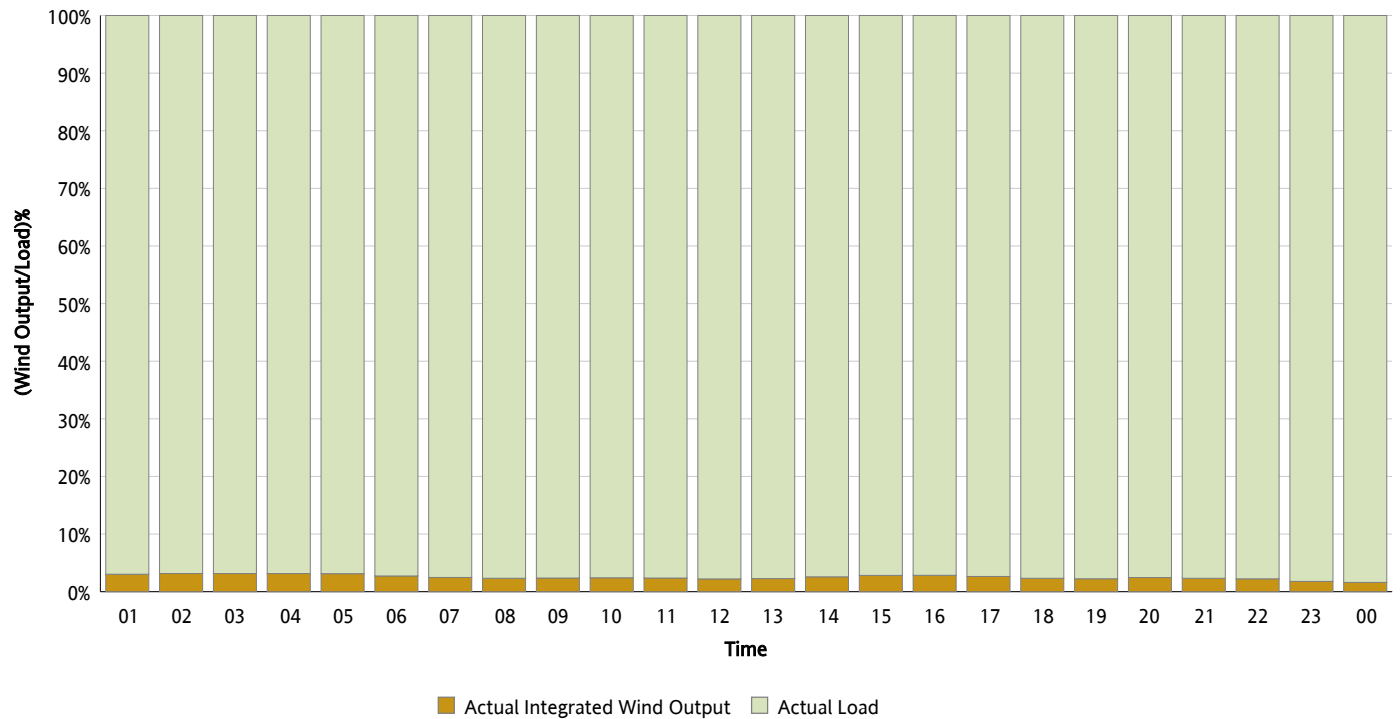
## Actual Wind Output as a Percentage of the Total Installed Wind Capacity

02/11/2014



## Actual Wind Output as a Percentage of the ERCOT Load

02/11/2014



## ERCOT Load vs. Actual Wind Output

02/04/2014 - 02/11/2014

